



M600/SLS

SAFETY | LUXURY | SUPPORT



Piper[®]



Download the Piper Aircraft App to experience our M600/SLS in flight.



WHEN PIPER INTRODUCED THE M600, WE EXCEEDED INDUSTRY EXPECTATIONS FOR PERFORMANCE AND OPERATIONAL EASE IN A SINGLE-ENGINE PRESSURIZED TURBOPROP. A CLEAN-SHEET DESIGNED WING AND THE ADDITION OF GARMIN'S G3000® AVIONICS SUITE WERE KEY FOUNDATIONAL ENHANCEMENTS THAT PAVED THE WAY FOR PRODUCT GROWTH. NOW WE ARE USING THAT PLATFORM TO RAISE THE BAR IN SAFETY, LUXURY AND SUPPORT. INTRODUCING THE M600/SLS, SETTING NEW STANDARDS FOR AIRCRAFT IN EVERY CATEGORY, AND MEETING THE HIGHEST STANDARD IN GENERAL AVIATION — YOURS.

HALO™ GENERAL AVIATION IS FOREVER CHANGED— PIPER FIRST TO MARKET WITH AUTOLAND

The M600/SLS features the most advanced avionics available for any general aviation aircraft: the Garmin G3000® avionics suite. However, the avionics in the M600/SLS are unlike what you'll find in most other aircraft because they include the HALO™ Safety System. HALO is loaded with safety features for both the air and the airfield. Most importantly, HALO includes the revolutionary Garmin® Autoland as standard equipment—because your safety isn't optional.

HALO Safety System Features:

Garmin Autoland

This fully autonomous landing system can be activated manually or automatically when the system senses pilot incapacitation. Autoland's algorithms consider runway length, time, wind, fuel, weather and glide path to determine the best airport for landing. The system notifies ATC, while passengers are updated on aircraft position and landing time. Key functions including FIKI/device activation, flap extension and gear extension are also automated. Once the aircraft touches the runway, the braking system will activate and bring the aircraft to a complete stop, the engine will shut down and passengers are instructed how to safely exit the aircraft.

Automatic Level Mode (Blue Button)

Returns the aircraft to a wings-level attitude with zero vertical speed at the push of a button.

Hypoxia Recognition with Automatic Descent Mode

Monitors pilot activity when the autopilot is engaged above 14,100 ft. If needed, it brings the aircraft to a lower altitude to allow recovery from hypoxia. If the pilot does not immediately recover, Autoland will activate and land the aircraft.

Electronic Stability & Protection (ESP)

Prevents the onset of stalls, spins, steep spirals and loss of control. ESP creates a soft barrier to flying outside the performance envelope.

Synthetic Vision

Ultimate situational awareness even in limited visibility.

SafeTaxi®

A highly detailed, geo-referenced airport map displays your aircraft's position on the airfield

with an overlaid map of hold-short lines.

TerminalTraffic™

Syncs with SafeTaxi maps to display all ADS-B-equipped aircraft and ground vehicles for increased situational awareness.

SurfaceWatch

Clear visual cues direct you to the correct runway on takeoff, approach and landing.

Flight Stream 510

A wireless, Bluetooth-enabled gateway that streamlines your workload by connecting preflight planning from your mobile device to the G3000 avionics suite.

Auto Throttle

Automatically adjusts the aircraft's power settings based on the preset flight profile – from climb-out to the landing approach.



HALO
SAFETY SYSTEM

Garmin Autoland automatically controls:

Gear Extension	FIKI
GRA 55 Radar Altimeter	Braking
Auto Throttle	Fuel Shutoff
Flaps	



Garmin G3000 Avionics Suite with HALO Safety System

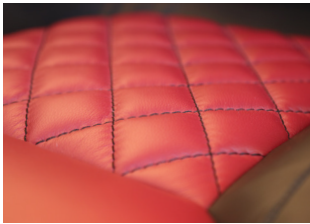
As installed in the M600/SLS, the G3000 suite is the most advanced avionics suite available for single-engine turboprop aircraft. Features like 60/40 split mode and enhanced map display bring invaluable situational information right in front of you. On approach, you no longer need to sacrifice your scan from the instruments to look down at the approach plate.

The high-resolution, dual-touchscreen controllers of the GTC 575 enable you to control your remote audio/intercom system, as well as a host of other information: transponder codes and idents; electronic checklist entries; flight plan entry and editing; plus, optional synoptic data and other selected mapping, traffic and weather.



STANDARD PREMIUM INTERIOR: ELEVATED STYLE AND LUXURY

With a sublime and beautifully appointed interior, Piper takes luxury to even greater heights with the EXP Package—now standard in the M600/SLS. Select from sophisticated interior color palettes with custom materials, stitching patterns and contrasting thread. Veneer and trim finishes further enhance the sense of unmatched refinement. Other new interior features include:



Dual-Tone Seats

All seats are clad in solid or two-toned, hand-selected and processed leather. Custom embroidery and stitching patterns make each aircraft unique.



Alcantara® (Firenze Sport)

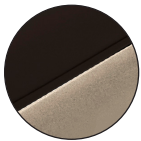
As sturdy as it is plush, this suede-like material can handle years of long flight hours.



Badging

The interior and exterior of your aircraft will feature personalized M600/SLS badging.

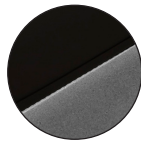
M600/SLS Standard Interior



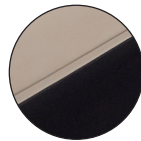
Mojave



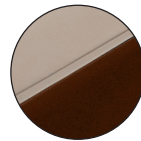
Sequoia Black



Geneva



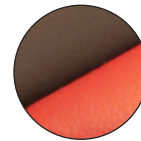
Firenze



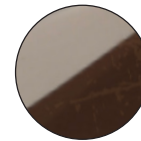
Sequoia Vanilla



Firenze Sport



Navarre



Adam's Ranch





ULTIMATE CARE PROGRAM: SUPPORT AT THE HIGHEST LEVEL

Piper Aircraft customers have always experienced uncompromising customer support and some of the best warranties in the industry. The moment you take delivery of your new M600/SLS, it starts to deliver for you. The joys of flying are engineered to excite and endure. Its progressive technology is designed to keep you connected and protected. Those who fly our M600/SLS will enjoy unparalleled service and peace of mind from our new Ultimate Care Program — the pinnacle of aircraft support and maintenance, standard with the M600/SLS.

We believe that every ownership experience should be extraordinary, which is why the M600/SLS comes standard with an exclusive service program for your first five years of ownership. The worry-free program includes all scheduled maintenance, as well as hourly and calendar-based inspections. Piper's Ultimate Care Program allows you to worry less and fly more.

The Ultimate Care Program Includes:

- All special hourly and calendar-based inspections (e.g., 50-hour, 200-hour, 400-hour)
- All scheduled maintenance to 1,500 total flight hours or the aircraft's fifth annual inspection
- Labor and parts for any mandatory Service Bulletins

Find a service center near you:

Piper Customer Support Hotline
Domestic: 1-877-879-0275
International: +001-772-299-2141





Global Customer Support

Customer support is available 24/7 for questions and concerns. For in-service product support and assistance, we offer a global network of more than 80 independently owned and operated approved Piper Service Centers. We also partner with Aviall and its network of more than 40 customer service centers to ensure parts and materials are always available.

Piper Warranty Program

We offer excellent warranties on all new M600/SLS aircraft.

- Piper airframe and systems:
5-year warranty
- Garmin® avionics:
5-year warranty for parts and labor
- Pratt & Whitney PT6A-42A powerplant:
7-year/2,500-hour warranty
- Hartzell Propeller:
5-year/1,500-hour warranty on Hartzell products installed by Piper

Pilot Training

Qualified pilots receive a one-week training course at the Piper factory in Vero Beach, Florida, from Legacy Flight Training—our exclusive M600/SLS training provider. It includes an academic ground school and aircraft-specific training in a full-motion flight training device. Flight time in your new aircraft is also available.

BY THE NUMBERS: THERE IS NO COMPARISON

Specifications

Performance Data

	Standard	Metric
274 ktas cruise with 45 min. reserve	1,209 nm	2,239 km
257 ktas cruise with 45 min. reserve	1,385 nm	2,565 km
184 ktas cruise with 45 min. reserve	1,658 nm	3,071 km
Max operating altitude	30,000 ft	9,144 m
Cabin altitude at 28,000 ft / 7,925 m	8,244 ft	2,513 m
Rate of climb (sea level, MTOW)	1,556 ft/min	474 m/min
Landing distance over 50 ft obstacle	2,659 ft	810 m

Cabin Dimensions

	Standard	Metric
Cabin volume	165 cu ft	4.67 cu m
Cabin length	12 ft 3 in	3.76 m
Cabin width	4 ft 1 in	1.25 m
Cabin height	3 ft 11 in	1.18 m
Door dimensions	3 ft 10 in x 2 ft	1.16 m x 0.61 m
Internal baggage	20 cu ft (100 lb)	0.57 cu m (45 kg)

Weights

	Standard	Metric
Max ramp weight	6,050 lb	2,744 kg
Max takeoff weight	6,000 lb	2,722 kg
Max landing weight	5,800 lb	2,631 kg
Max zero-fuel weight	4,850 lb	2,200 kg
Standard empty weight	3,650 lb	1,656 kg
Fuel capacity, usable	260 gal	984 L
Payload with full fuel	658 lb	298 kg

Range Maps



Los Angeles to Seattle
831 nautical miles

Los Angeles to Houston
1,197 nautical miles



New York City to Dallas
1,208 nautical miles

New York City to Miami
950 nautical miles



London to Madrid
679 nautical miles

London to Athens
1,312 nautical miles

Dimensions

Wingspan: 43.16 ft | 13.2 m

Height: 11.3 ft | 3.4 m

Length: 29.7 ft | 9.1 m



A CLASS OF SERVICES TO
ENHANCE YOUR M600/SLS



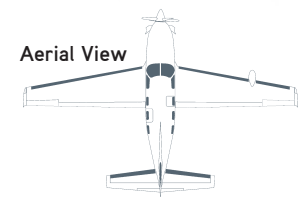
Front View



Side View



Aerial View



Standard Avionics

Garmin G3000® Avionics Suite

with HALO Safety System:

GFC 700 Digital Autopilot
Dual GTC 575 Touchscreen Cockpit Management Units
GMA 36B Digital Audio Panel
GTX 345R Transponder (ADS-B™ In & Out™)
GWX 75 Weather Radar
Garmin® FliteCharts
Garmin® GI-275 Standby
Integrated Digital Cabin Pressurization

HALO Safety System:

Garmin Autoland (fully autonomous)
SurfaceWatch
Auto Throttle
Flight Stream 510
SafeTaxi®
Synthetic Vision
TerminalTraffic™
Emergency Descent Mode
Automatic Level Mode
Underspeed Protection (USP)
Coupled Go-Around
Electronic Stability & Protection (ESP)

Standard Interior

Choose from several interior color palettes as well as the ability to personalize several aspects of the interior—from stitching to branding.

Additional Standard Equipment

FIKI - Flight Into Known Icing
PiperAire Air Conditioning
Bose A20 Headsets
USB Charging Ports

Optional Equipment

110-Volt AC power outlet
Hartzell 5-Blade composite propeller
TAWS-B (Terrain Awareness and Warning System)
Jeppesen ChartView
GWX 8000 Weather Radar
GTX 335 Second Digital Transponder
GTX 345D Diversity Transponder & GTX 335 Digital Transponder
GSR 56 Iridium Transceiver
GDL 69A SXM Satellite Radio / Weather
L3 WX-500 Stormscope
Becker RA3502 Remote ADF Receiver
Safe Flight Angle of Attack (AOA) System
GTS 855 Traffic Advisory System—TCAS / ACAS (Includes GTS 825)
BendixKing KN 63 Remote DME

Other Options

Fire detection system
AmSafe seatbelts (Pilot and co-pilot positions)
Lee AeroSpace CoolView Windows
RVSM STC

Optional Premier Packages

Awareness package

- Jeppesen Chartview
- GTS 855 Traffic Advisory System
TCAS / ACAS I
- TAWS-B (Terrain Awareness and Warning System)
- GTX 335 Second Digital Transponder
- GWX 8000 Weather Radar

Weather package

- GDL 69A SXM Satellite Weather
- L3 WX-500 StormScope

International package

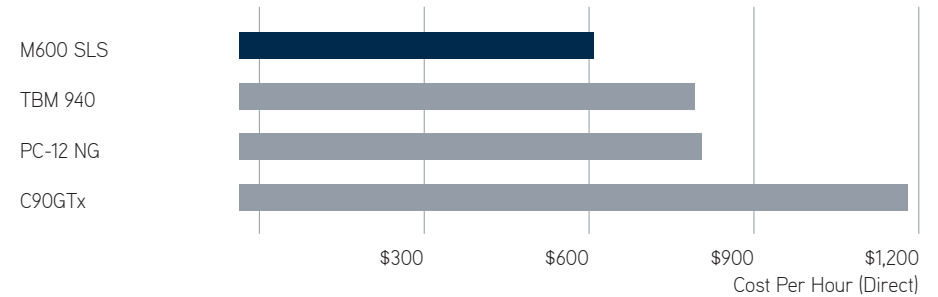
- GSR 56 Iridium Transceiver
- BendixKing KN 63 Remote DME
- GTX 345D Diversity Transponder & GTX 335 Digital Transponder

Premium package

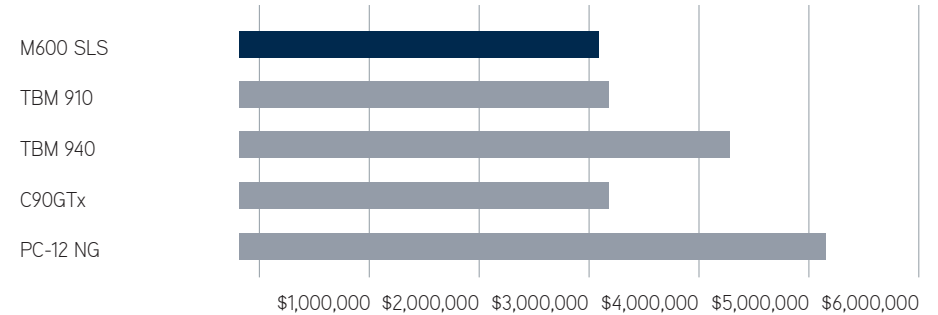
- 110-Volt AC power outlet
- Hartzell 5-Blade composite prop
- Lee CoolView Windows
- AmSafe seatbelts (Pilot and co-pilot positions)

(USD)

Direct Operating Costs (Standard-Equipped)



Retail List Price (Standard-Equipped)





piper.com | 1.772.299.2403

Garmin® is a registered trademark of Garmin Ltd. or its subsidiaries and G1000® and G3000® are registered trademarks of Garmin Ltd. or its subsidiaries. These trademarks may not be used without the express permission of Garmin. Piper Aircraft, Inc. reserves the right to make changes, including, but not limited to, changes in specifications, materials, equipment and/or prices at any time without prior notice. It is the responsibility of the pilot to conduct all operations in accordance with the approved Pilot's Operating Handbook, which is the only official source of data. © 2021 Piper Aircraft, Inc.